

& VICTORIA ALBERT ART & LOVE

For Victoria and Albert, art was an important part of everyday life and a way they expressed their love for each other. Around a third of the objects in the exhibition were exchanged as gifts between the couple to mark special occasions. They range from the simple and sentimental, such as a set of jewellery in the form of orange blossom, to superb examples of early Italian painting given by the Queen to the Prince for his birthday in 1846.



Top right: Henry Pierce Bone, *Queen Victoria*, 1839 (detail)

Middle left: Duccio and Assistants, *Triptych: The Crucifixion and other scenes*, c.1302-8 (detail)

Middle right: Franz Xaver Winterhalter, *The Royal Family in 1846*, 1846 (detail)

Above: Frederic Leighton, *Cimabue's Madonna carried in procession*, 1853-5 (detail)

How to find us

The entrance to The Queen's Gallery is on Buckingham Palace Road.

By Underground: Victoria, St James's Park or Green Park.

By bus: Number 11, 211 and C1 or C10.



PLANNING YOUR VISIT

Opening times

Daily 10:00–17:30
(last admission 16:30)

Entry by timed ticket

As the Gallery is part of a working palace, closures may occur at short notice. Please check before planning a visit.

Access



Please telephone 020 7766 7324 or visit www.royalcollection.org.uk for further information.

Exhibition publications

The hardback catalogue *Victoria & Albert: Art & Love* edited by Jonathan Marsden is published by Royal Collection Publications, exhibition price £35.00. The paperback book *Passionate Patrons* is also available, price £9.95. Both titles can be purchased online at www.royalcollection.org.uk

Gallery admission prices

(including audio tour)

Adult	£8.75
Over 60/Student	£7.75
Under 17	£4.50
Under 5	Free
Family (2 adults and 3 under 17s)	£22.00

Advance tickets from 020 7766 7301 or www.royalcollection.org.uk (a booking fee applies)



Enjoy free re-admission for a year if you buy your ticket directly from us. Simply ask us to stamp your ticket on your first visit.

Keep in touch

Sign up for our e-Newsletter at www.royalcollection.org.uk and keep up to date with new exhibitions, podcasts, events, publications and the latest news.

Ticket Sales and Information Office

Tel: 020 7766 7301

Groups (15+): 020 7766 7321

www.royalcollection.org.uk

The Royal Collection © 2010 Her Majesty Queen Elizabeth II

Admission to The Queen's Gallery is managed by the Royal Collection Trust, a charity registered in England and Wales (1016972) and in Scotland (SCO39772)

& VICTORIA ALBERT ART & LOVE

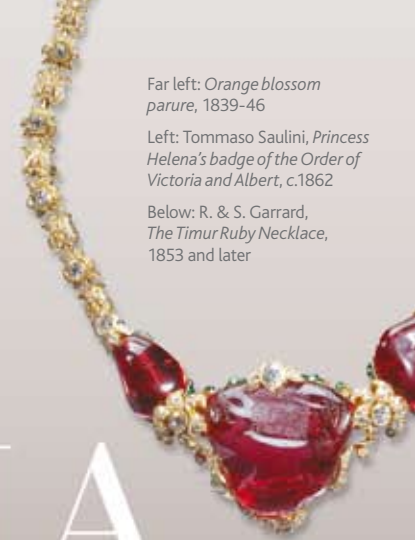


THE QUEEN'S GALLERY
BUCKINGHAM PALACE

THE QUEEN'S GALLERY BUCKINGHAM PALACE

19 March – 31 October 2010

This major exhibition is the first ever to focus on Queen Victoria and Prince Albert's shared enthusiasm for art. Bringing together over 400 items from the Royal Collection, it celebrates the royal couple's mutual delight in collecting and displaying works of art, from the time of their engagement in 1839 to the Prince's untimely death in 1861. The exhibition also challenges the popular image of Victoria – the melancholy widow of 40 years – and reveals her as a passionate and open-minded young woman.

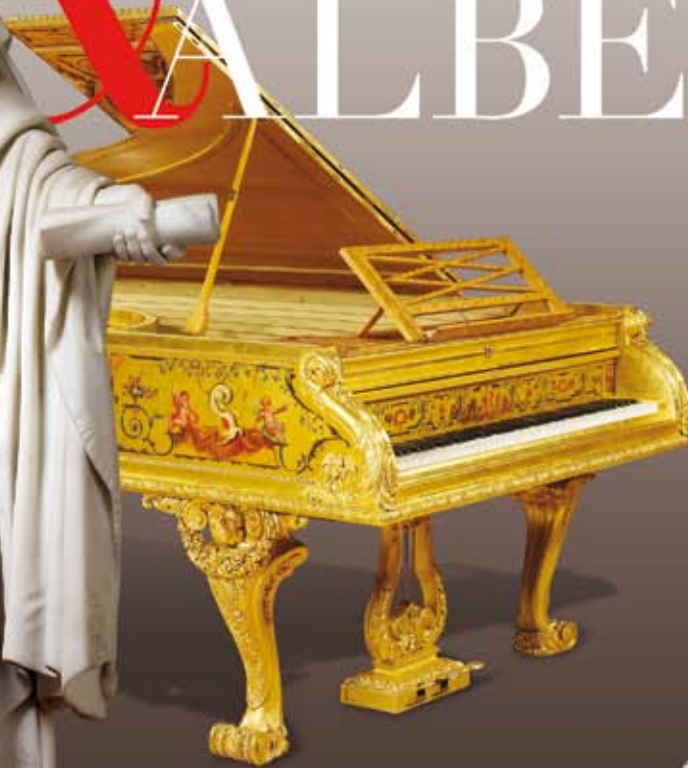


Far left: *Orange blossom parure*, 1839-46

Left: Tommaso Saulini, *Princess Helena's badge of the Order of Victoria and Albert*, c.1862

Below: R. & S. Garrard, *The Timur Ruby Necklace*, 1853 and later

VICTORIA & ALBERT ART & LOVE



Far left: Prince Albert with R. & S. Garrard, *Centrepiece*, 1842/3
Left: John Gibson, *Queen Victoria*, 1847

Above: S. & P. Erard, *Grand piano*, 1856
Right: South India (Travancore), *Throne and footstool*, c. 1850