

## Royal Mews

### **Length of Visit**



The average duration of a visit to the Royal Mews is one hour. Visitors are, however, free to explore the Mews at their own pace using the complimentary self-guided audio tour. Guided tours of the Royal Mews, which are included in the admission price, also depart at half-hourly intervals and last for 45 minutes.

### **Information for Visitors with Physical Access Requirements**



#### **Wheelchairs**

Manual wheelchairs are available to borrow free of charge on a first come, first served basis for the duration of a visit.

#### **Access**

All areas of the Royal Mews have level access. As the Royal Mews is an historic building the floors are uneven and cobbled in places and visitors should take care.

#### **Respite Seating**

Benches are available throughout the visitor route.

#### **Lavatories**

Accessible lavatories are located at the rear of the Royal Mews, half way along the visitor route.

#### **Assistance dogs**



Assistance dogs are welcome and water is available on request.

## **Parking & Transport**

There is no parking available at the Royal Mews. The nearest public parking is on Palace Street. A disabled space can be reserved in the NCP Trafalgar Car Park, Spring Gardens SW1A 2BN by ringing + 44 (0) 20 7930 1565 or + 44 (0) 20 7930 6194. Please see [www.westminster.gov.uk/carparks](http://www.westminster.gov.uk/carparks) for further information.

The following buses run close to Buckingham Palace and are accessible for wheelchair users: 2, 8, 11, 16, 36, 52, 73, 148, 211, C1 and C10. The nearest London underground station with wheelchair access is Westminster.

For full information please see the Royal Mews page on our website.

## **Information for Visitors who are Deaf or Hard of Hearing**

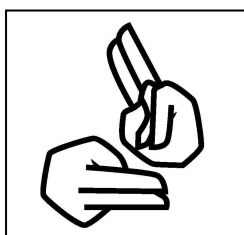


### **Induction loops**

The ticket sales desks, shop till counters and the audio tour collection and return points are equipped with induction loops. Hearing aids should be switched to the T position. A complimentary audio tour is available in English, French, German, Spanish, Italian, Japanese, Chinese and Russian. The audio tour handsets are T-coil compatible and equipped with volume control. Neck loops are also available on request. A printed version of the audio tour transcript is also available in the above languages.

### **Guided Tours**

Guided tours are available of the Royal Mews free of charge and last for 45 minutes. Guides can wear portable induction loops on request. These can be pre-booked through the Specialist Sales team on + 44 (0) 20 7766 7324 or [specialistsales@royalcollection.org.uk](mailto:specialistsales@royalcollection.org.uk).



BSL interpreted and Lipspeaking guided tours of the Royal Mews run on selected dates. Contact the Specialist Sales team on + 44 (0) 20 7766 7324 or [specialistsales@royalcollection.org.uk](mailto:specialistsales@royalcollection.org.uk) for details.



### **Assistance dogs**

Assistance dogs are welcome and water is available on request.

### **Information for Visitors who are Blind or Partially Sighted**



### **Access**

All areas of the Royal Mews have level access.

### **Flooring**

As the Royal Mews is an historic building, the floors are uneven and cobbled in places, and visitors should take care.

### **Tours**

Guided tours of the Royal Mews are available free of charge. A complimentary descriptive audio tour is also available in English. Non-descriptive, standard tours are also available in English, French, German, Spanish, Italian, Japanese, Chinese and Russian.

### **Visual aids**

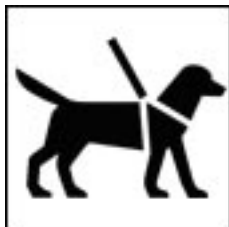


The Visitor Information leaflet and the audio tour transcript are available in large print.

### **Lavatories**

Accessible lavatories are located at the rear of the Royal Mews, half way along the visitor route.

### **Assistance dogs**



Assistance dogs are welcome and water is available on request.