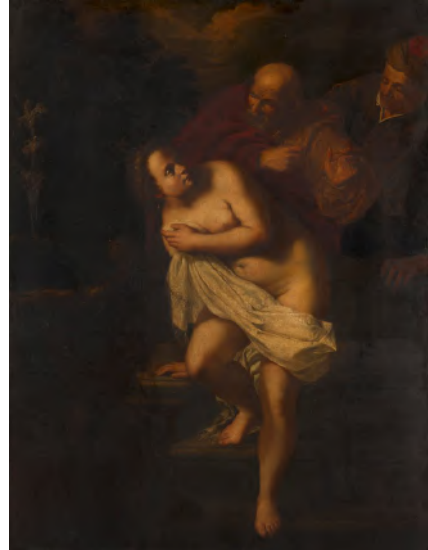


Lost Artemisia Gentileschi painting rediscovered in the Royal Collection



Artemisia Gentileschi, *Susanna and the Elders*,
c.1638–9, following the completion of extensive
conservation treatment.



Artemisia Gentileschi, *Susanna and the Elders*,
c.1638–9, prior to conservation treatment.



Artemisia Gentileschi, *Self-portrait as the Allegory of
Painting*, c.1638–39.



Orazio Gentileschi, *Joseph and Potiphar's wife*,
c.1630–32.



Curators put the finishing touches to the new display of paintings by Artemisia and Orazio Gentileschi in the Queen's Drawing Room at Windsor Castle



The 'CR' brand that was discovered as the canvas was being relined, confirming that the painting was once in Charles I's collection.



Conservator
Adelaide Izat
working on
*Susanna and the
Elders*.



Here, the left-hand side of the painting is obscured by centuries of dirt, overpaint and discoloured varnish, while the right-hand side has undergone conservation treatment.



X-radiography (left) and infrared reflectography (right) have revealed changes that Artemisia made to the composition.



Richard Cattermole, *The Queen's Bedchamber, Kensington Palace, c.1818*



Close-up detail of *Susanna and the Elders* in *The Queen's Bedchamber, Kensington Palace, c.1818*

Images are available [via Dropbox](#)

Credit line for all images unless otherwise stated:

Royal Collection Trust / © His Majesty King Charles III 2023

Images are for single use only in news reporting in connection with the special display of works by Artemisia Gentileschi and Orazio Gentileschi at Windsor Castle, and are not to be archived, sold on to third parties or used out of context.