

Wednesday, 3 April 2024

The newly reserviced East Wing of Buckingham Palace to open for public tours for the first time



Centre Room

Credit: Peter Smith



Principal Corridor (north section)

Credit: Peter Smith



Yellow Drawing Room

Credit: Peter Smith



Hexagonal nine-tiered Chinese porcelain pagoda (set of four),

1800—1820



Chinese porcelain vases mounted as oil lamps, with stands (set of two), 1710—1725



Pair of Chinese porcelain vases with mounts, second half of the 18th-century



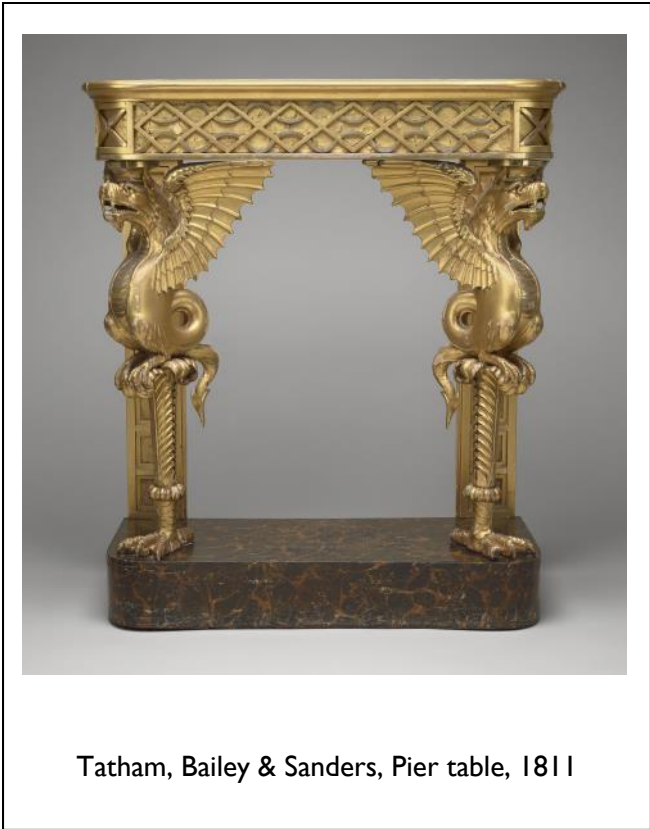
Chinese Imperial Silk wall hanging (set of two),
18th-century



William Perry, Glass chandelier, 1818



The Kylin Clock, 1700—1822



Tatham, Bailey & Sanders, Pier table, 1811



James Roberts, *The Yellow Drawing Room at Buckingham Palace*, 1855



James Roberts, *The Tapestry Drawing Room at Buckingham Palace as prepared for the Empress Eugénie*, 1855

Now the Centre Room



John Charlton, *'God Save The Queen': Queen Victoria arriving at St Paul's Cathedral on the occasion of the Diamond Jubilee Thanksgiving Service*, 1897—1899



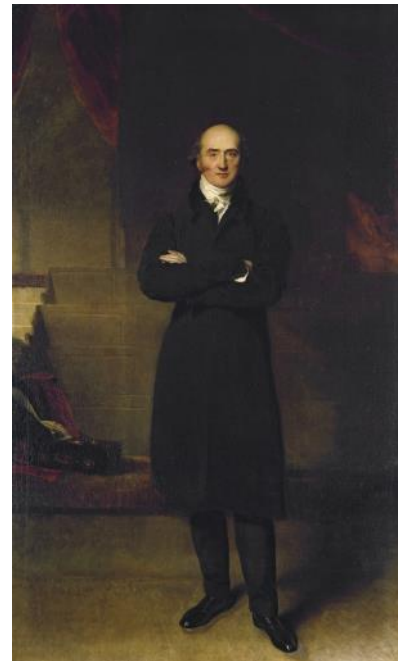
Albert Graefle, After Franz Xaver Winterhalter, *Princess Charlotte of Belgium, Empress of Mexico*, 1867—1868



Franz Xaver Winterhalter, *Queen Victoria with the Prince of Wales*, 1846



Thomas Gainsborough, *John Hayes St Leger*, 1782



Sir Thomas Lawrence, *George Canning*, 1825—1829

Images are available [via Dropbox](#)

Credit line for all images:

**Royal Collection Trust / © His Majesty King Charles III 2024, plus the
photographer's name where it is given in the file name.**

Images are for single use only in news reporting in connection with public tours of the East Wing of Buckingham Palace and are not to be archived, sold on to third parties or used out of context.

For more information, contact the Royal Collection Trust Press Office: press@rct.uk or +44 (0)20 7839 1377.